

Radianz[®]
Quartz Surfaces

RADIANZ

Quartz Surfaces
www.radianz-quartz.com

Radianz[®]
Quartz Surfaces



RADIANZ, ADVANTAGES THAT GO BEYOND THE SURFACE

RADIANZ, PREMIUM QUARTZ SURFACES

Comprised of high-density natural quartz, Radianz® surfaces emulate the sophistication and timeless beauty of natural stone. Its superior composition provides qualities that are unobtainable in granite or marble, including resistance to heat and superficial marring. Because Radianz material is non-porous and easy to clean, it's ideal for healthcare, hospitality, food service, commercial, and residential applications.

INFINITY

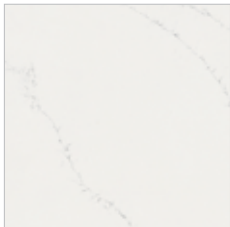
The Cirrus Prestige Collection is inspired by Mother Nature's Marbles. It elegantly captures the beauty of marble, a pattern preserving the passage of time - layer by layer. It can be applied to a variety of spaces such as countertops and wall claddings as it creates a distinguished atmosphere. The hygienic property of this collection has a strong advantage against daily contaminations, retaining its own nobility and shine.



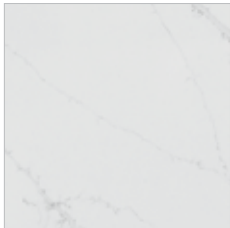
NEW
Calacatta Victory
CV199



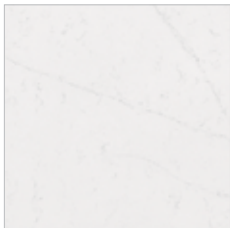
Calacatta Dolce
CD150



Calacatta Royal
CV120



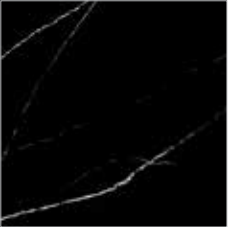
Calacatta Veneto
CV130



Calacatta Venatino
CV110

Cirrus
Prestige

Marquina Lavagna



Marquina Lavagna
ML950



Statuario Massa
SM160



Statuario Crux
SC185



NEW Calacatta Victory CV199



Calacatta Dolce CD150
* Book Matching available



Calacatta Venatino CV110



Marquina Lavagna ML950



Calacatta Royal CV120



Calacatta Veneto CV130



Statuario Massa SM160
* Book Matching available



Statuario Crux SC185

NUANCED GOLD

Its natural texture resembles that of gold ore from a mine. Soft and elegant gold color bleeds into Radianz, making new patterns combined with contemporary style and classic design. The warmth from the colors is transformed into splendor as soon as the lights are turned on.



Starry
ST450



Alluring
AL450



Splendor
SP850

NUANCED PLATINUM

Inspired by platinum, a precious metal more expensive than gold, **PEGASUS**, **ARIES** and **AQUARIUS** are more cool toned than gold, while maintaining a sense of luxury. They permeate into the interior space by blending with the strong textures of Radianz.



Aries
AR765



Pegasus
PG760



Aquarius
AQ680



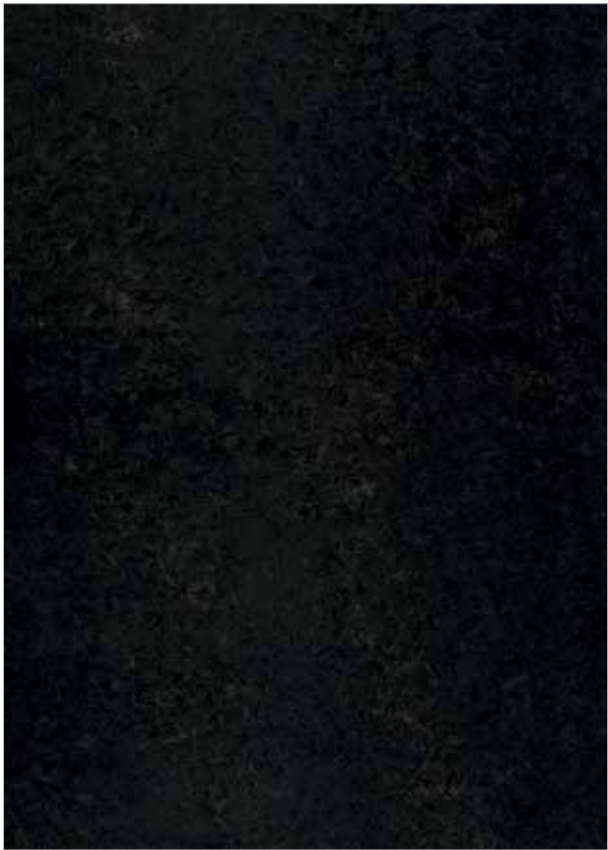
Starry ST450



Alluring AL450



Pegasus PG760



Splendor SP850



Aries AR765



Aquarius AQ680





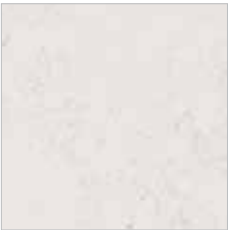
Pristine
PG126



Starlight
ST740



Interstellar
IN170



Andes
AD123



Annapuruna
AP120





Pristine PG126



Starlight ST740



Annapuruna AP120



Interstellar IN170



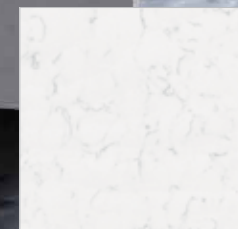
Andes AD123



Annapuruna



Denali Cloud



Minta
MI150



Carola
CR157



Lucern Lake
LL195



Denali Cloud
DC155

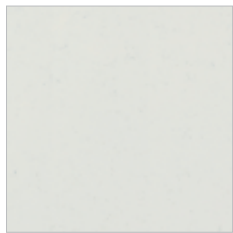
Cirrus



Sequoia
SE155



Halo
HA120



Divine
DI180



Vega
VE150





Minta MI150



Carola CR157



Sequoia SE155



Halo HA120



Lucern Lake LL195



Denali Cloud DC155



Divine DI180



Vega VE150

Cirrus



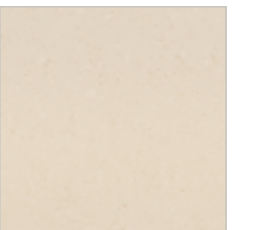
Carrara Bella
CB180



Carrara Luca
CL170



Rapture
RA150

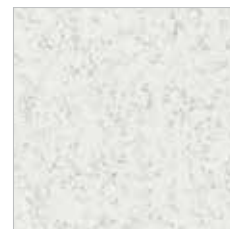


Volga
VO255

Carrara Bella



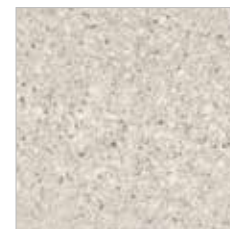
Pluto



Acacia
AC711



Pluto
PL722



Verona Verde
VV254



Cadiz
CD760



Carrara Bella CB180



Carrara Luca CL170



Acacia AC711



Pluto PL722



Rapture RA150



Volga VO255



Verona Verde VV254



Cadiz CD760

Cirrus

Urban



Urban
UR750



Contrail
CO811



Ceres
CO925

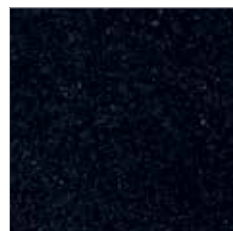


Modern
MO799

Cirrus



Charcoal
CH949



Aster
AS955



Spa Black
SB950



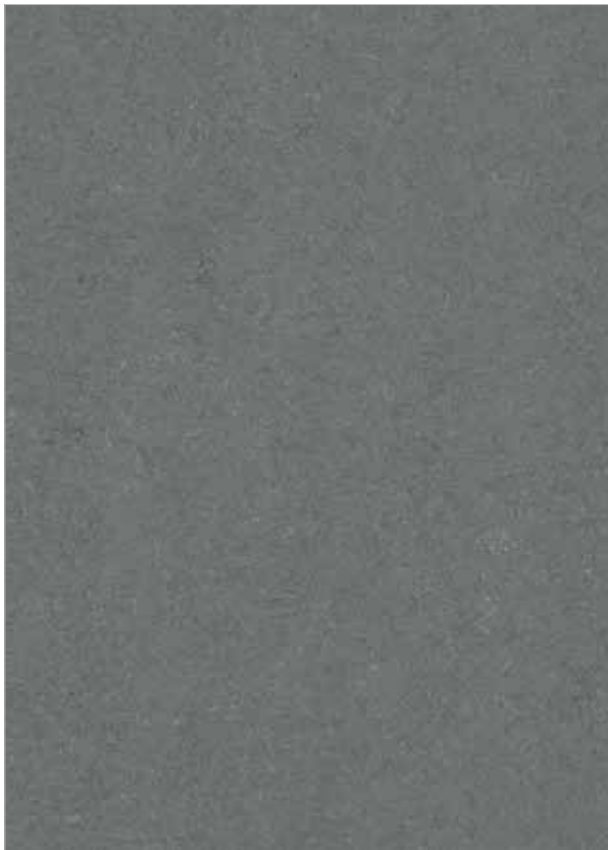
Ashford Fog
AF953



Aster



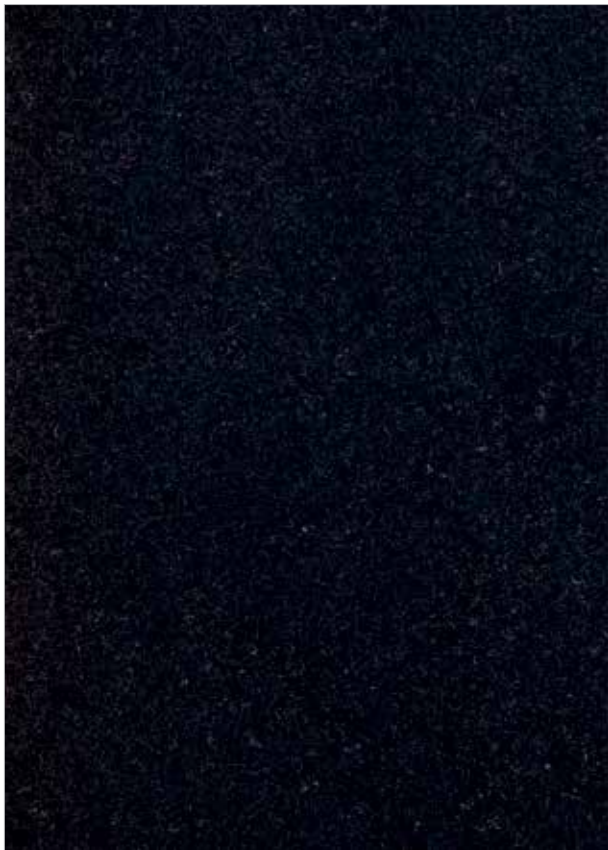
Urban UR750



Ceres CO925



Charcoal CH949



Aster AS955



Contrail CO811



Modern MO799



Spa Black SB950

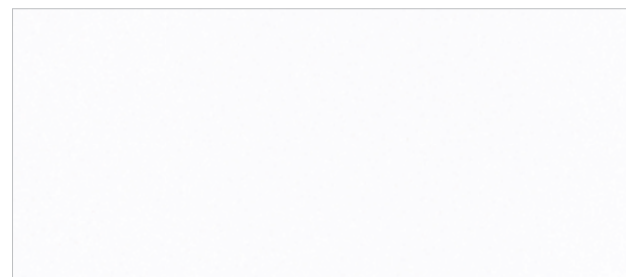


Ashford Fog AF953

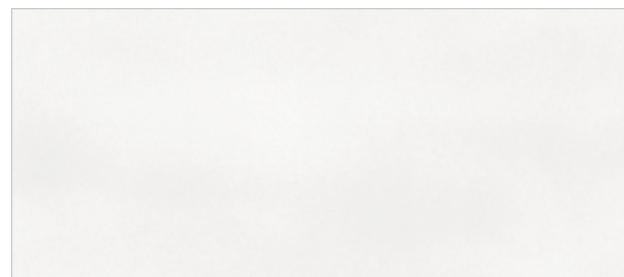
Classic



Urban



Diamond White DW105



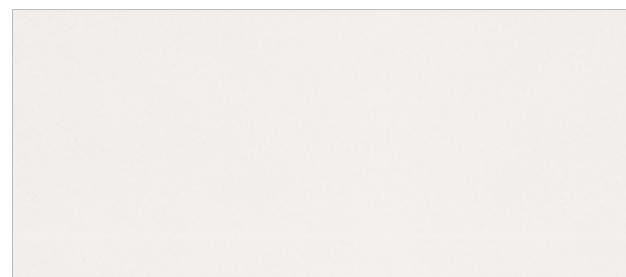
Pacifica White PW160



Aleutian White AW130



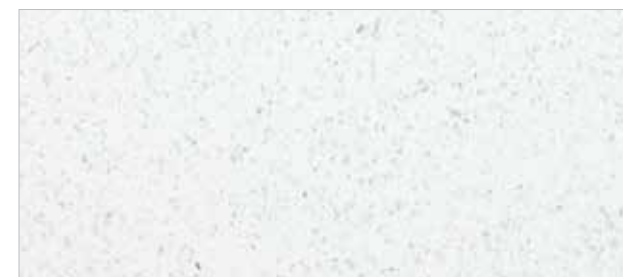
Polar White PW133



NEW Juliet White JW198



Everest White EW120



Mont Blanc Snow MS141



Adirondack Birch AB144

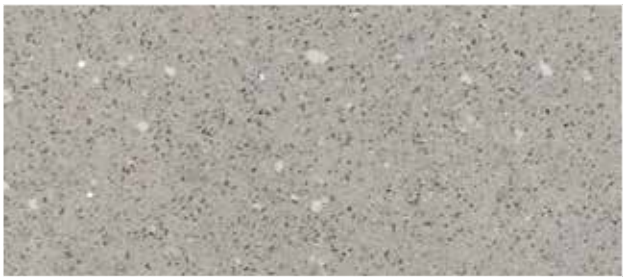




St. Helens White SH145



Antigua Beach AN230



Elbrus Boulder EB866



Imperial Gray IG910



Kauai Cream KC213



Bristol Beige BB227



Mirama Bronze MI780



Cumberland Flax CF350



Mariposa Buff MU410



Himalaya Ridge HR755



Columbia Gray CG910



Gentle Gray GG900






Sierra Bedrock SB744



Eco-friendly Materials, Radianz

Colors shown may vary from the actual product.
Please refer to product sample for true color representation.
• Please consult your local supplier of Radianz® quartz for specific recommended care and maintenance practices.
• To view new colors in greater detail, please visit www.radianz-quartz.com

-  Matte Finish Available
-  Recycled
-  Book Match available



PERFORMANCE PROPERTIES

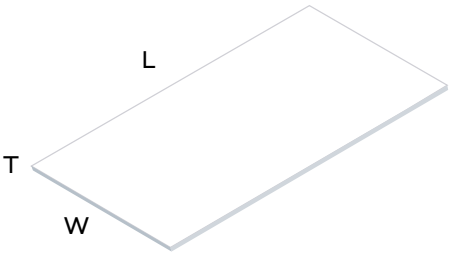
| PROPERTY | UNIT | TEST RESULT | TEST METHOD |
|---|------|------------------------|--------------------|
| Specific Gravity | - | 2.41 | ASTM D 792-08 |
| Water Absorption | % | 0.03 | ASTM C 373-06 |
| Compression Strength (Dry) | Mpa | 213.74 | ASTM C 170-09 |
| Compression Strength (Wet) | Mpa | 251.16 | |
| Flexural Strength | Mpa | 53.6 | ASTM D 790-07 |
| Abrasion Resistance | mg | 606 | ASTM D 4060-07 |
| Moh’s Hardness | - | 7 | DIN EN 101-92 |
| Rockwell Hardness | HRM | 114 | ASTM D 785-03 |
| Slip Resistance-Static Coefficient of Friction (as received) | - | 0.91/0.49 (Dry/Wet) | ASTM C 1028-07 |
| Slip Resistance-Static Coefficient of Friction (with renovator) | - | 0.89/0.48 (Dry/Wet) | |
| Point Impact | - | Passes | ANSI Z 124.6-07 |
| Stain Resistance | - | Passes | |
| Cigarette Test | - | Passes | |
| Chemical Resistance | - | Passes | |
| Boiling Water Resistance | - | No effect | NEMA LD 3-2000 3.5 |
| High Temp Resistance | - | No effect | NEMA LD 3-2000 3.6 |
| Thermal Expansion | / °C | 1.35 ×10 ⁻⁵ | ASTM D 696-03 |
| Fungal Resistance | - | No Growth | ASTM G 21-96 |
| Bacterial Resistance | - | No Growth | ASTM G 22-96 |
| Flammability | - | Class A | ASTM E 84-09 |
| Flame Spread Index | - | 10 | |
| Smoke Developed Index | - | 180 | |



| NO | RADIANZ COLORS | Certificate % |
|----|-----------------|---------------|
| 1 | Kunlun Ink | 42% |
| 2 | Gentle Gray | 30% |
| 3 | Elbrus Boulder | 30% |
| 4 | Mont Blanc Snow | 25% |
| 5 | Aster | 20% |
| 6 | Imperial Gray | 10% |

| NO | RADIANZ COLORS | Certificate % |
|----|----------------|---------------|
| 7 | Sierra Bedrock | 10% |
| 8 | Mariposa Buff | 4% |
| 9 | Mirama Bronze | 4% |
| 10 | Verona Verde | 4% |
| 11 | Splendor | 4% |
| 12 | Aquarius | 4% |

PRODUCT DIMENSIONS (NOMINAL SIZE)



| | WIDTH | LENGTH | THICKNESS | WEIGHT |
|----------|--------------|---------------|----------------------------|-------------------------------|
| STANDARD | 152cm (60in) | 310cm (122in) | 2cm (0.8in) 3cm (1.2in) | 235kg (518lb) / 353kg (778lb) |
| JUMBO L | 160cm (63in) | 320cm (126in) | | 250kg (551lb) / 376kg (829lb) |
| JUMBO XL | 165cm (65in) | 330cm (130in) | | 251kg (575lb) / 391kg (862lb) |

Slab dimension provided are nominal values. Actual usable slab surface may be slightly less per side.

RESIDENTIAL WARRANTY

We trust in the quality of Radianz® quartz products. To ensure your satisfaction, LOTTE CHEMICAL CO.,LTD. is proud to offer a limited non-transferable 15-year warranty.

COMMERCIAL WARRANTY

The Commercial 10-year Limited Warranty applies to Radianz® quartz that have been installed in an interior, commercial use application. For more details regarding the commercial warranty, please consult with your Radianz® distributor or contractor.

RADIANZ MATTE FINISH

The Radianz matte finish is a brushed texture with uniquely soft touch that offers high-quality Color consistency. The matte finish may require extra care and maintenance than the polished finishes. Due to the nature of the surface design, smudges, fingerprints, water spots and other signs of daily living might be more visible on the matte finish. It is recommended that common household spills are dried immediately using non-abrasive cleaning products and microfiber towel. For more information, please visit our website at www.radianz-quartz.com.

PREVENTING DAMAGE

Protect the surface when using metal utensils, cutlery and cookware during food preparation and avoid direct contact with extremely hot objects and caustic chemicals.

DISCLAIMER

The information contained herein is provided by LOTTE CHEMICAL Co., Ltd. and LOTTE Chemical California INC. for information purposes only and should be used by individuals with technical experience and knowledge in the area. LOTTE CHEMICAL Co., Ltd. does not make any representation or warranties of the usefulness or expected result of the information, and does not assume any responsibility whatsoever related to the use of the information. Exclusion of the implied warranties may not apply in certain jurisdictions. LOTTE Chemical California INC. is a subsidiary of LOTTE CHEMICAL Co., Ltd.